



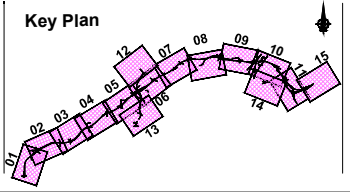
San áiríneamh tá sonraíocht Shuirbhíreacht Ordnáis Éireann arna aistriú go dtí físeán OSI Uimh. 2010/18CCMA/Comhairle Contae na Gaillimhe. Sáráilíon aistriú go dtí neamháráilíthe cóipeacht Shuirbhíreacht Ordnáis Éireann agus Rialtas na hÉireann. © Suirbhíreacht Ordnáis Éireann, 2010.

© Suirbhíreacht Ordnáis Éireann. Gach ceart ar chosaint. Uimhir cheadúnais 2010/18CCMA/Comhairle Contae na Gaillimhe.

Includes Ordnance Survey Ireland data reproduced under OSI Licence number 2010/18CCMA/Galway County Council. Unauthorised reproduction infringes Ordnance Survey Ireland and Government of Ireland copyright. © Ordnance Survey Ireland, 2010.

© Ordnance Survey Ireland. All rights reserved. Licence number 2010/18CCMA/Galway County Council.

Clients



Consultant

Corporate House  
City East Business Park  
Ballybrit, Galway, Ireland.

Tel +353 (0)91 460675  
www.N6GalwayCity.ie  
www.arup.ie

Job Title  
**N6 Galway City Ring Road**

Scale  
1:20,000 @ A1 , 1:40,000 @ A3

Date:  
February 2018

Issue	Date	By	Chkd	Appd
I2	14/03/2018	AG	JD	EMC
I1	22/02/2018	AG	JD	EMC

Drawing Title  
**Road Lighting Columns and Brackets Location**

Key Plan  
Drawing Status  
**For Information**

Job No  
**233985**

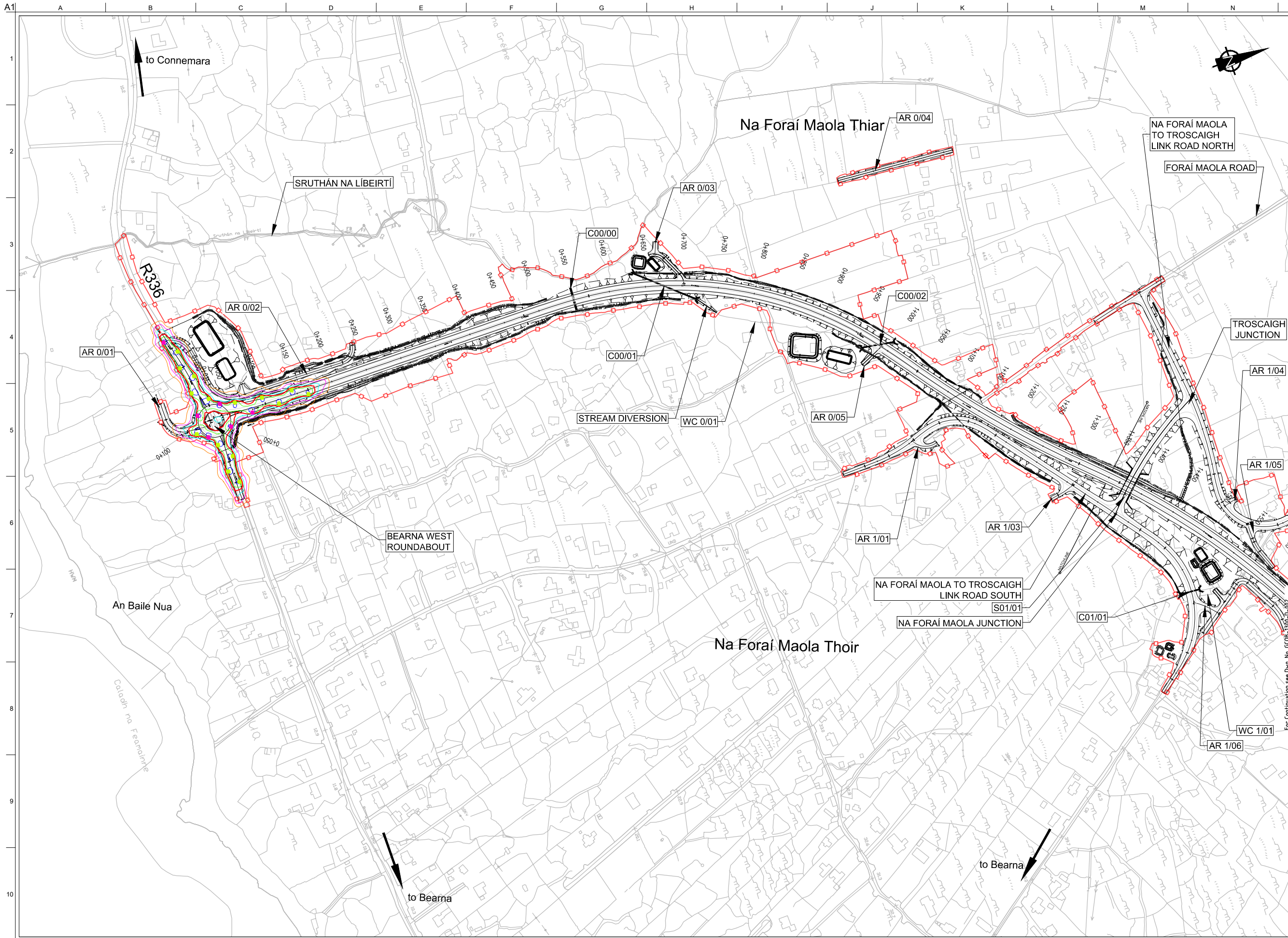
Drawing No  
**GCOB-1300-D-000**

Issue  
**I2**



**DESIGN REPORT**

- Legend:**
- City Boundary
  - Proposed Development Boundary
  - Proposed Road Development
  - Structure (S)
  - Proposed Culvert
  - Proposed Attenuation Pond / Infiltration Basin
  - Proposed Stream Diversion
- Proposed Road Lighting Lanterns**
- Road Lighting Lantern Type A  
9430 lm LED mounted on 10m high columns
  - Road Lighting Lantern Type B  
5410 lm LED mounted on 10m high columns
  - Road Lighting Lantern Type C  
5410 lm LED mounted on 10m high columns
  - Road Lighting Lantern Type D  
8500 lm LED with backlight cowl mounted on 10m high columns
  - Road Lighting Floodlight Type E  
9380 lm LED mounted at 6m
  - Road Lighting Floodlight Type F  
8070 lm LED with front and backlight cowl mounted at 10m
- Proposed Road Lighting Isolines**
- Isoline 0.1 lux
  - Isoline 1.0 lux
  - Isoline 2.0 lux
  - Isoline 5.0 lux
  - Isoline 10 lux
  - Isoline 15 lux
  - Isoline 25 lux
- AR** AR - Access Road  
**WC** WC - Watercourse  
**C** C - Culvert  
**R** R - Retaining Wall  
**S** S - Structure  
**G** G - Gantry



San áiríúmh tá sonraíocht Shuirbhíreachtú Orlándaís Éireann arna áitirgeadh fíúí Cheadúnas OSI Uimh. 2010/18CCMA/Comhairle Contae na Gaillimhe. Sáráilom áitirgeadh neamhdáraithe cóipeacht Shuirbhíreachtú Orlándaís Éireann agus Rialtas na hÉireann. © Suirbhíreachtú Orlándaís Éireann, 2010.

© Suirbhíreachtú Orlándaís Éireann. Gach ceart ar chosaint. Uimhir cheadúnais 2010/18CCMA/Comhairle Contae na Gaillimhe.

Includes Ordnance Survey Ireland data reproduced under OSI Licence number 2010/18CCMA/Galway County Council. Unauthorised reproduction infringes Ordnance Survey Ireland and Government of Ireland copyright. © Ordnance Survey Ireland, 2010.

© Ordnance Survey Ireland. All rights reserved. Licence number 2010/18CCMA/Galway County Council.

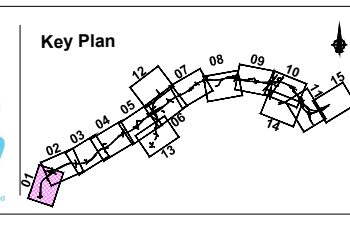
**Clients**

Comhairle Chontae na Gaillimhe  
Galway County Council

**Galway City Transport Project**

**An Roinn Iompair**  
Turasóireachta agus Spóirt  
Department of Transport, Tourism and Sport

**TIIP**  
Transport Infrastructure Ireland



**Consultant**

**ARUP**

Corporate House  
City East Business Park  
Ballybrit, Galway, Ireland.

Tel +353 (0)91 460675  
www.NGalwayCity.ie  
www.arup.ie

**Job Title**  
N6 Galway City Ring Road

**Scale**  
1:5000 @ A3

**Date:**  
February 2018

Drawing Status				
Issue	Date	By	Chkd	Appd
11	22/02/2018	AG	JD	EMC

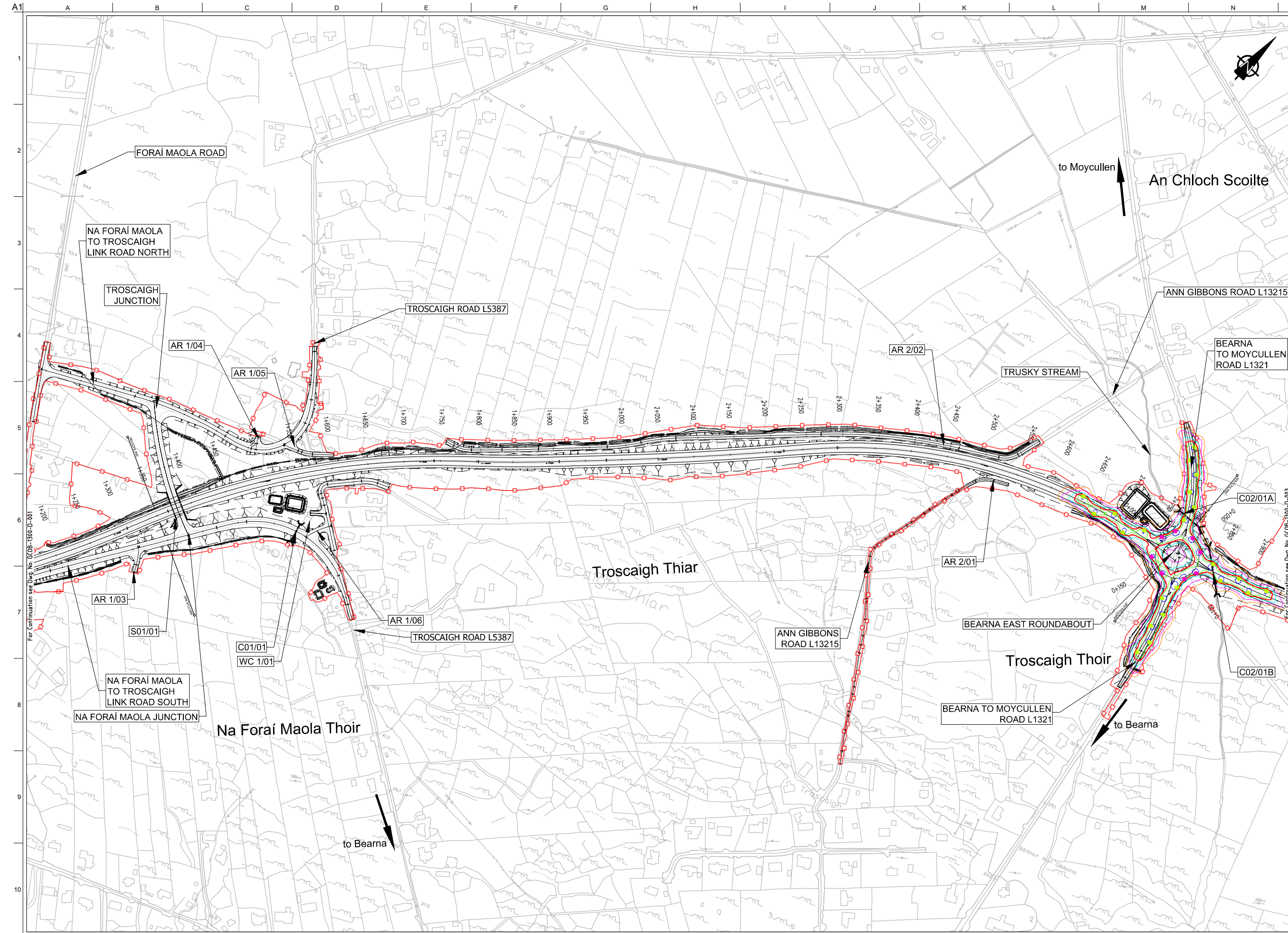
**Drawing Title**  
Road Lighting Columns and Brackets Location  
CH.0+000 to CH.1+350  
Sheet 1 of 15

**Drawing Status**

**For Information**

Job No	Drawing No	Issue
233985	GCOB-1300-D-001	11





**DESIGN REPORT**

- Legend:**
- City Boundary
  - Proposed Development Boundary
  - Proposed Road Development
  - Structure (S)
  - Proposed Culvert
  - Proposed Attenuation Pond / Infiltration Basin
  - Proposed Stream Diversion

- Proposed Road Lighting Lanterns**
- Road Lighting Lantern Type A  
9430 lm LED mounted on 10m high columns
  - Road Lighting Lantern Type B  
5410 lm LED mounted on 10m high columns
  - Road Lighting Lantern Type C  
5410 lm LED mounted on 10m high columns
  - Road Lighting Lantern Type D  
8500 lm LED with backlight cowl mounted on 10m high columns
  - Road Lighting Floodlight Type E  
9380 lm LED mounted at 6m
  - Road Lighting Floodlight Type F  
8070 lm LED with front and backlight cowl mounted at 10m

- Proposed Road Lighting Isolines**
- Isoline 0.1 lux
  - Isoline 1.0 lux
  - Isoline 2.0 lux
  - Isoline 5.0 lux
  - Isoline 10 lux
  - Isoline 15 lux
  - Isoline 25 lux

- AR** AR - Access Road
- WC** WC - Watercourse
- C** C - Culvert
- R** R - Retaining Wall
- S** S - Structure
- G** G - Gantry

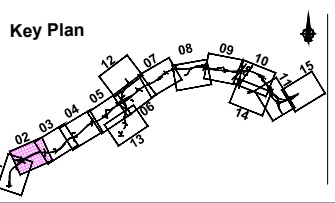
Sun áiríonn sé sonraíochtaí Shairbhíreacht Orlándaí Éireann arna aistriú go dtí físeán Cheadúnas OSI Uimh. 2010/18CCMA/Comhairle Contae na Gaillimhe. Sáráilonn aistriúchán neamhdáiríochtaí cóipeacht Shairbhíreacht Orlándaí Éireann agus Rialtas na hÉireann. © Shairbhíreacht Orlándaí Éireann, 2010.

© Shairbhíreacht Orlándaí Éireann. Gach ceart ar chosaint.  
Uimhir cheadúnais 2010/18CCMA/Comhairle Contae na Gaillimhe.

Includes Ordnance Survey Ireland data reproduced under OSI Licence number 2010/18CCMA/Galway County Council.  
Unauthorised reproduction infringes Ordnance Survey Ireland and Government of Ireland copyright. © Ordnance Survey Ireland, 2010.

© Ordnance Survey Ireland. All rights reserved. Licence number 2010/18CCMA/Galway County Council.

Clients



Consultant

Job Title  
**N6 Galway City Ring Road**

Scale  
1:5000 @ A3

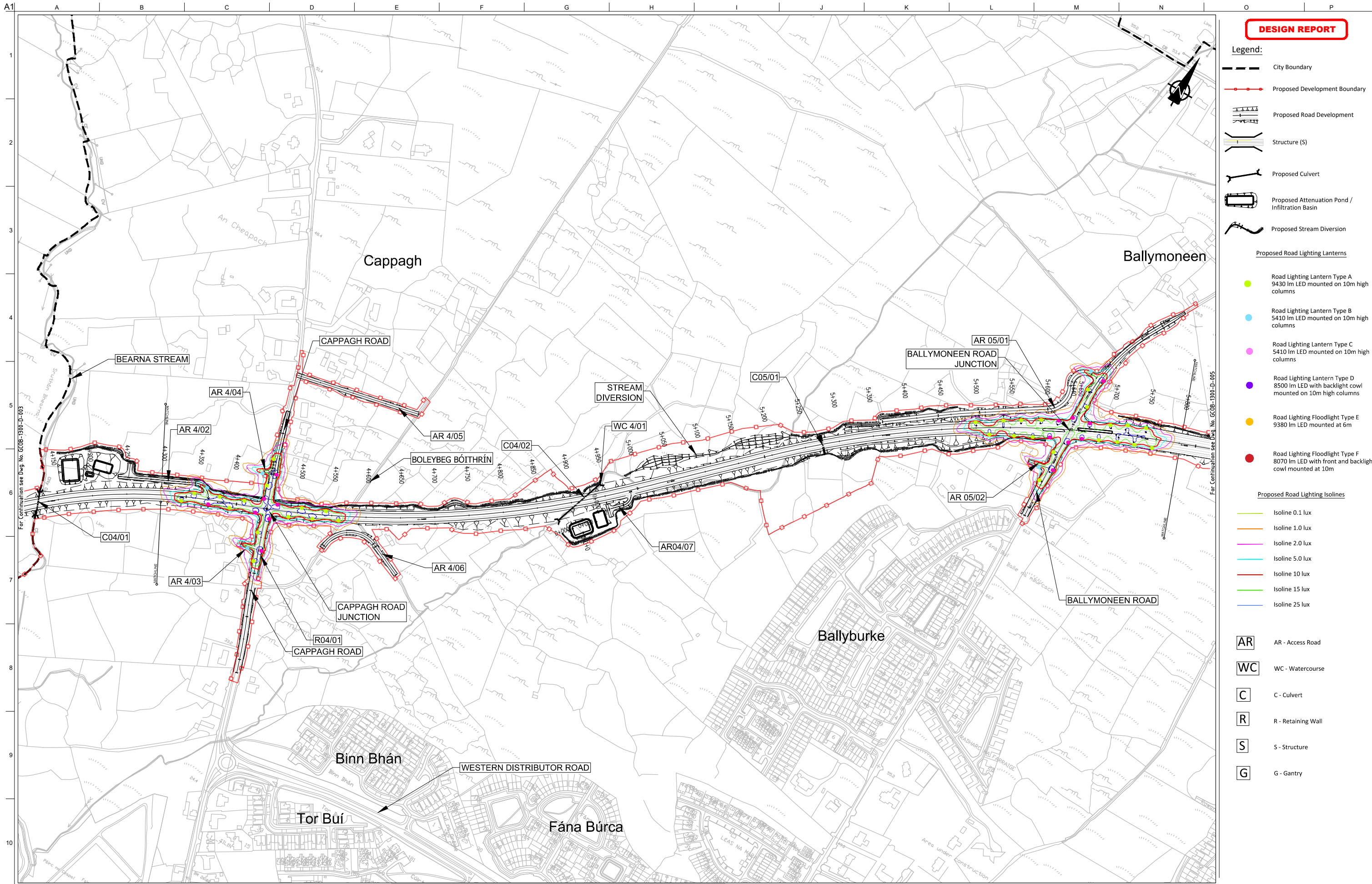
Date  
February 2018

Drawing Title				
Road Lighting Columns and Brackets Location				
CH.1+350 to CH.2+799				
Sheet 2 of 15				
Drawing Status				
<b>For Information</b>				
Job No	Drawing No	Issue		
233985	GCOB-1300-D-002	11		









**DESIGN REPORT**

- Legend:**
- City Boundary
  - Proposed Development Boundary
  - Proposed Road Development
  - Structure (S)
  - Proposed Culvert
  - Proposed Attenuation Pond / Infiltration Basin
  - Proposed Stream Diversion

- Proposed Road Lighting Lanterns**
- Road Lighting Lantern Type A  
9430 lm LED mounted on 10m high columns
  - Road Lighting Lantern Type B  
5410 lm LED mounted on 10m high columns
  - Road Lighting Lantern Type C  
5410 lm LED mounted on 10m high columns
  - Road Lighting Lantern Type D  
8500 lm LED with backlight cowl mounted on 10m high columns
  - Road Lighting Floodlight Type E  
9380 lm LED mounted at 6m
  - Road Lighting Floodlight Type F  
8070 lm LED with front and backlight cowl mounted at 10m

- Proposed Road Lighting Isolines**
- Isoline 0.1 lux
  - Isoline 1.0 lux
  - Isoline 2.0 lux
  - Isoline 5.0 lux
  - Isoline 10 lux
  - Isoline 15 lux
  - Isoline 25 lux

- AR** AR - Access Road
- WC** WC - Watercourse
- C** C - Culvert
- R** R - Retaining Wall
- S** S - Structure
- G** G - Gantry

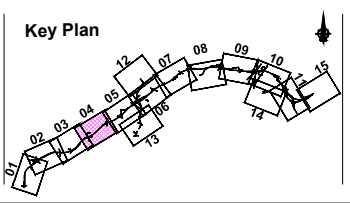
Son áiríomh tá sonraíocht Shairbhíreacht Orlándaí Éireann arna aistriú go dtí Ceardúnas OSI Uimh. 2010/18CCMA/Comhairle Contae na Gaillimhe. Sárúilom aistriú go dtí neamhdáiríocht cóipeacht Shairbhíreacht Orlándaí Éireann agus Rialtas na hÉireann. © Shairbhíreacht Orlándaí Éireann, 2010.

© Shairbhíreacht Orlándaí Éireann. Gach ceart ar chosaint.  
Uimhir cheadúnais 2010/18CCMA/Comhairle Contae na Gaillimhe.

Includes Ordnance Survey Ireland data reproduced under OSI Licence number 2010/18CCMA/Galway County Council.  
Unauthorised reproduction infringes Ordnance Survey Ireland and Government of Ireland copyright. © Ordnance Survey Ireland, 2010.

© Ordnance Survey Ireland. All rights reserved. Licence number 2010/18CCMA/Galway County Council.

Clients



Consultant

Corporate House  
City East Business Park  
Ballybrit, Galway, Ireland.

Tel +353 (0)91 460675  
www.N6GalwayCity.ie  
www.arup.ie

Job Title  
**N6 Galway City Ring Road**

Scale  
1:5000 @ A3

Date:  
February 2018

Issue	Date	By	Chkd	Appd
11	22/02/2018	AG	JD	EMC

Drawing Title  
**Road Lighting Columns and Brackets Location  
CH.4+300 to CH.5+800  
Sheet 4 of 15**

Drawing Status  
**For Information**

Job No <b>233985</b>	Drawing No <b>GCOB-1300-D-004</b>	Issue <b>11</b>
-------------------------	--------------------------------------	--------------------



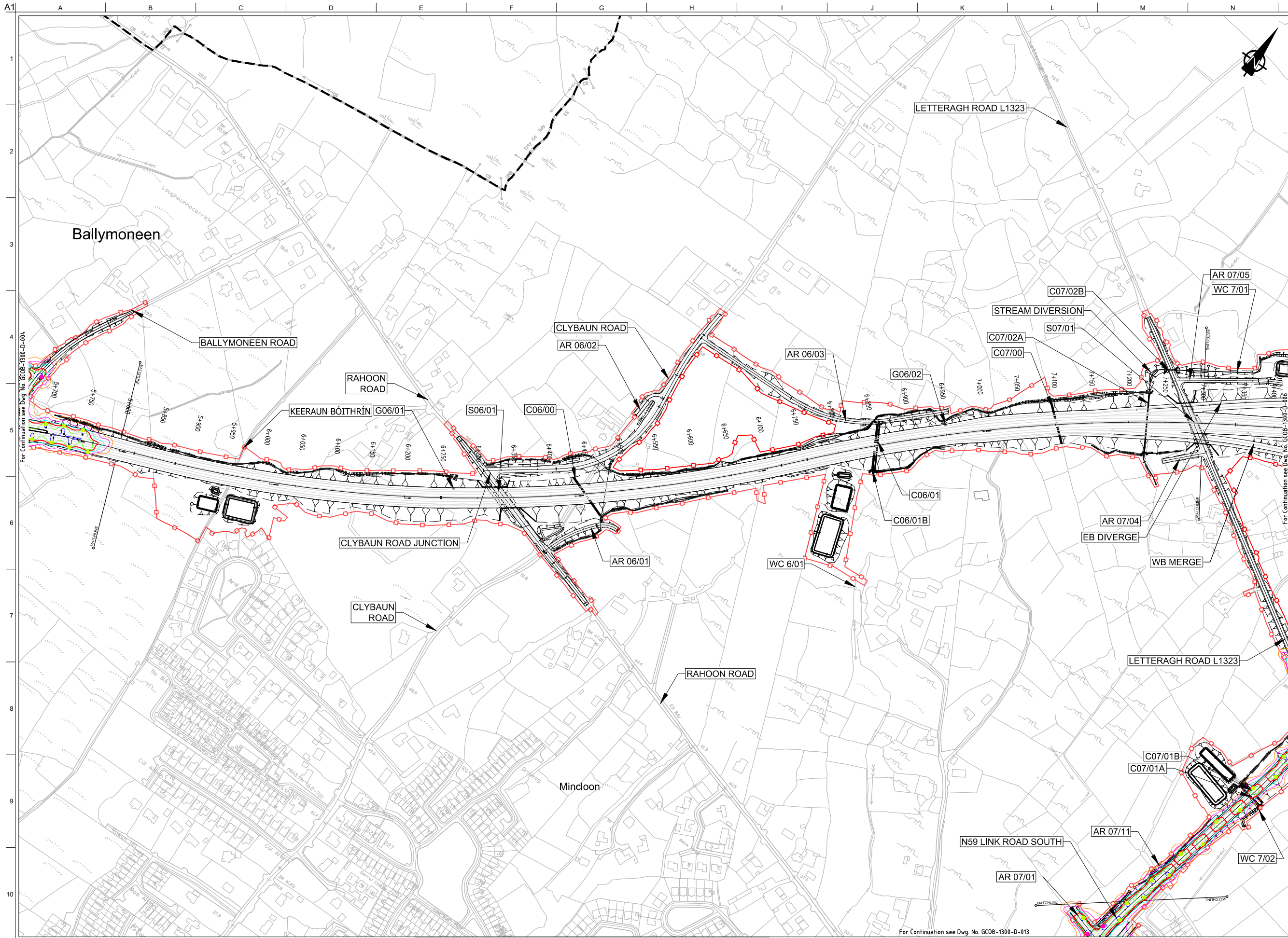
**DESIGN REPORT**

- Legend:**
- City Boundary
  - Proposed Development Boundary
  - Proposed Road Development
  - Structure (S)
  - Proposed Culvert
  - Proposed Attenuation Pond / Infiltration Basin
  - Proposed Stream Diversion

- Proposed Road Lighting Lanterns**
- Road Lighting Lantern Type A  
9430 lm LED mounted on 10m high columns
  - Road Lighting Lantern Type B  
5410 lm LED mounted on 10m high columns
  - Road Lighting Lantern Type C  
5410 lm LED mounted on 10m high columns
  - Road Lighting Lantern Type D  
8500 lm LED with backlight cowl mounted on 10m high columns
  - Road Lighting Floodlight Type E  
9380 lm LED mounted at 6m
  - Road Lighting Floodlight Type F  
8070 lm LED with front and backlight cowl mounted at 10m

- Proposed Road Lighting Isolines**
- Isoline 0.1 lux
  - Isoline 1.0 lux
  - Isoline 2.0 lux
  - Isoline 5.0 lux
  - Isoline 10 lux
  - Isoline 15 lux
  - Isoline 25 lux

- AR** AR - Access Road
- WC** WC - Watercourse
- C** C - Culvert
- R** R - Retaining Wall
- S** S - Structure
- G** G - Gantry



Sun áiríonn sé sonraíocht Shairbhéiríochtaí Orlándaí Éireann arna aistriú go dtí físeán OSI Uimh. 2010/18CCMA/Comhairle Contae na Gaillimhe. Sáráilonn aistriú go dtí físeán na cíoscheart Shairbhéiríochtaí Orlándaí Éireann agus Rialtas na hÉireann. © Sairbhéiríochtaí Orlándaí Éireann, 2010.

© Sairbhéiríochtaí Orlándaí Éireann. Gach ceart ar chosaint. Uimhir cheadainis 2010/18CCMA/Comhairle Contae na Gaillimhe.

Includes Ordnance Survey Ireland data reproduced under OSI Licence number 2010/18CCMA/Galway County Council. Unauthorised reproduction infringes Ordnance Survey Ireland and Government of Ireland copyright. © Ordnance Survey Ireland, 2010.

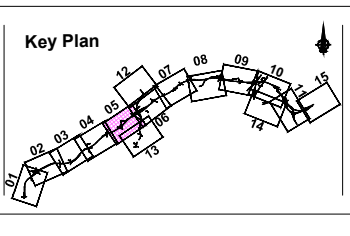
© Ordnance Survey Ireland. All rights reserved. Licence number 2010/18CCMA/Galway County Council.

**Clients**

**Comhairle Chontae na Gaillimhe**  
Galway County Council

**An Roinn Iompair**  
Turasóireachta agus Spóirt

**TIIP**  
Bonnagarraíompaire Éireann



**Consultant**

**ARUP**

Corporate House  
City East Business Park  
Ballybrit, Galway, Ireland.

Tel +353 (0)91 460675  
www.N6GalwayCity.ie  
www.arup.ie

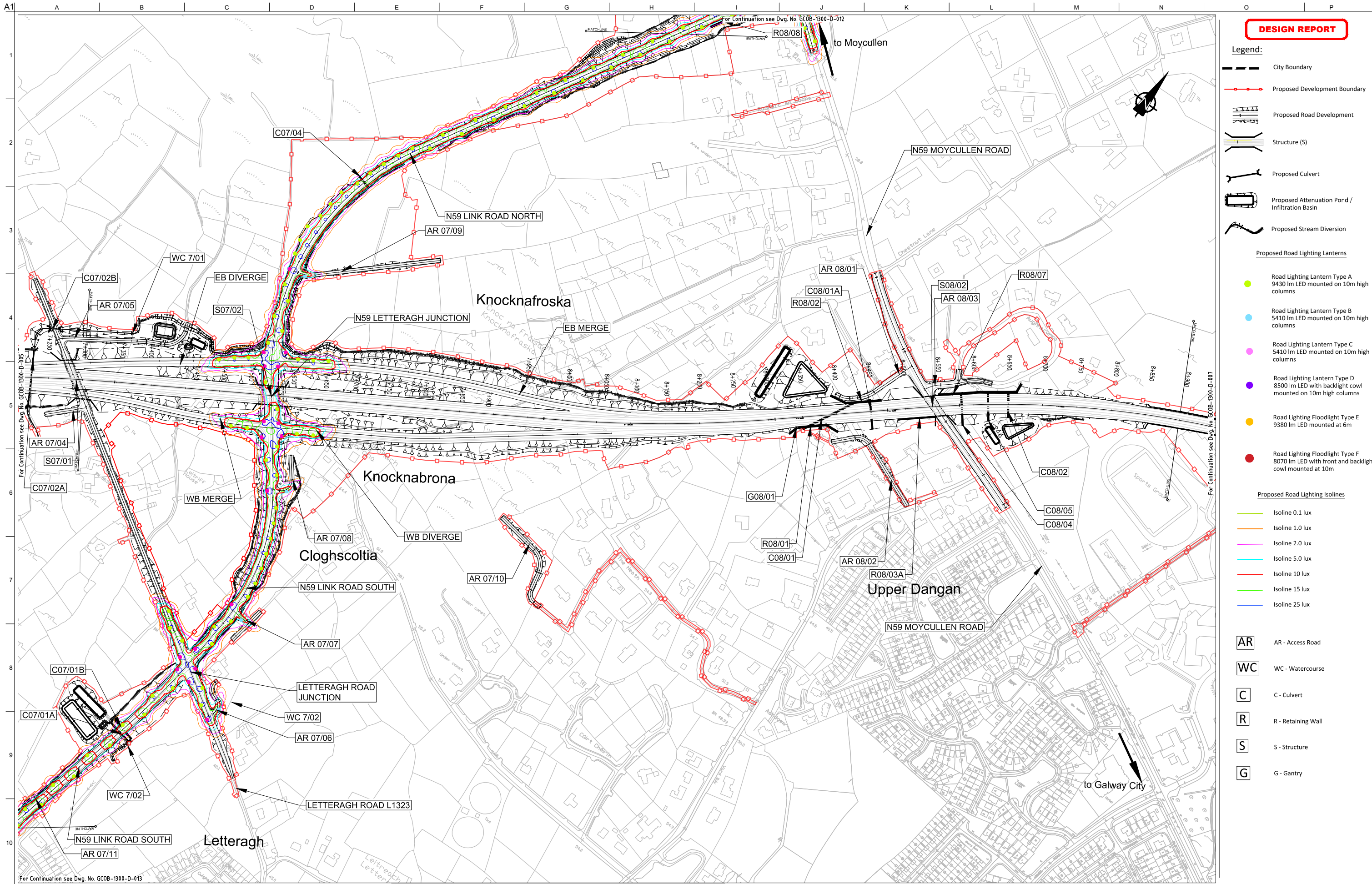
**Job Title**  
N6 Galway City Ring Road

**Scale**  
1:5000 @ A3

**Date:**  
February 2018

Drawing Title				
Road Lighting Columns and Brackets Location CH.5+800 to CH.7+300 Sheet 5 of 15				
Drawing Status				
11	22/02/2018	AG	JD	EMC
Issue	Date	By	Chkd	Appd
For Information				
Job No	Drawing No	Issue		
233985	GCOB-1300-D-005	11		





**DESIGN REPORT**

- Legend:**
- City Boundary
  - Proposed Development Boundary
  - Proposed Road Development
  - Structure (S)
  - Proposed Culvert
  - Proposed Attenuation Pond / Infiltration Basin
  - Proposed Stream Diversion

- Proposed Road Lighting Lanterns**
- Road Lighting Lantern Type A  
9430 lm LED mounted on 10m high columns
  - Road Lighting Lantern Type B  
5410 lm LED mounted on 10m high columns
  - Road Lighting Lantern Type C  
5410 lm LED mounted on 10m high columns
  - Road Lighting Lantern Type D  
8500 lm LED with backlight cowl mounted on 10m high columns
  - Road Lighting Floodlight Type E  
9380 lm LED mounted at 6m
  - Road Lighting Floodlight Type F  
8070 lm LED with front and backlight cowl mounted at 10m

- Proposed Road Lighting Isolines**
- Isoline 0.1 lux
  - Isoline 1.0 lux
  - Isoline 2.0 lux
  - Isoline 5.0 lux
  - Isoline 10 lux
  - Isoline 15 lux
  - Isoline 25 lux

- AR** AR - Access Road
- WC** WC - Watercourse
- C** C - Culvert
- R** R - Retaining Wall
- S** S - Structure
- G** G - Gantry

San áiríúmh tá sonraíocht Shairbhíreacha Orlándaí Éireann arna aistriú go dtailíocht físe Chaidéinas OSI Uimh. 2010/18CCMA/Comhairle Contae na Gaillimhe. Sáráilom aistriú go dtailíocht na císcheart Shairbhíreacha Orlándaí Éireann agus Rialtas na hÉireann. © Sairbhíreacha Orlándaí Éireann, 2010.

© Sairbhíreacha Orlándaí Éireann. Gach ceart ar chosaint.  
Uimhir cheadainis 2010/18CCMA/Comhairle Contae na Gaillimhe.

Includes Ordnance Survey Ireland data reproduced under OSI Licence number 2010/18CCMA/Galway County Council.  
Unauthorised reproduction infringes Ordnance Survey Ireland and Government of Ireland copyright. © Ordnance Survey Ireland, 2010.

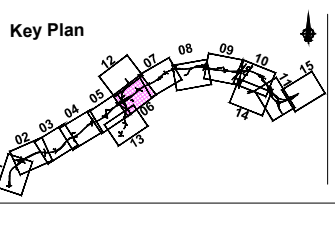
© Ordnance Survey Ireland. All rights reserved. Licence number 2010/18CCMA/Galway County Council.

Clients

Comhairle Chontae na Gaillimhe  
Galway County Council

An Roinn Iompair  
Turasóireachta agus Spóirt

TII



Consultant

**ARUP**

Corporate House  
City East Business Park  
Ballybrit, Galway, Ireland.

Tel +353 (0)91 460675  
www.N6GalwayCity.ie  
www.arup.ie

Job Title  
**N6 Galway City Ring Road**

Scale  
1:5000 @ A3

Date:  
February 2018

Issue	Date	By	Chkd	Appd
11	22/02/2018	AG	JD	EMC

Drawing Title  
**Road Lighting Columns and Brackets Location  
CH.7+300 to CH.8+900  
Sheet 6 of 15**

Drawing Status  
**For Information**

Job No <b>233985</b>	Drawing No <b>GC0B-1300-D-006</b>	Issue <b>11</b>
-------------------------	--------------------------------------	--------------------

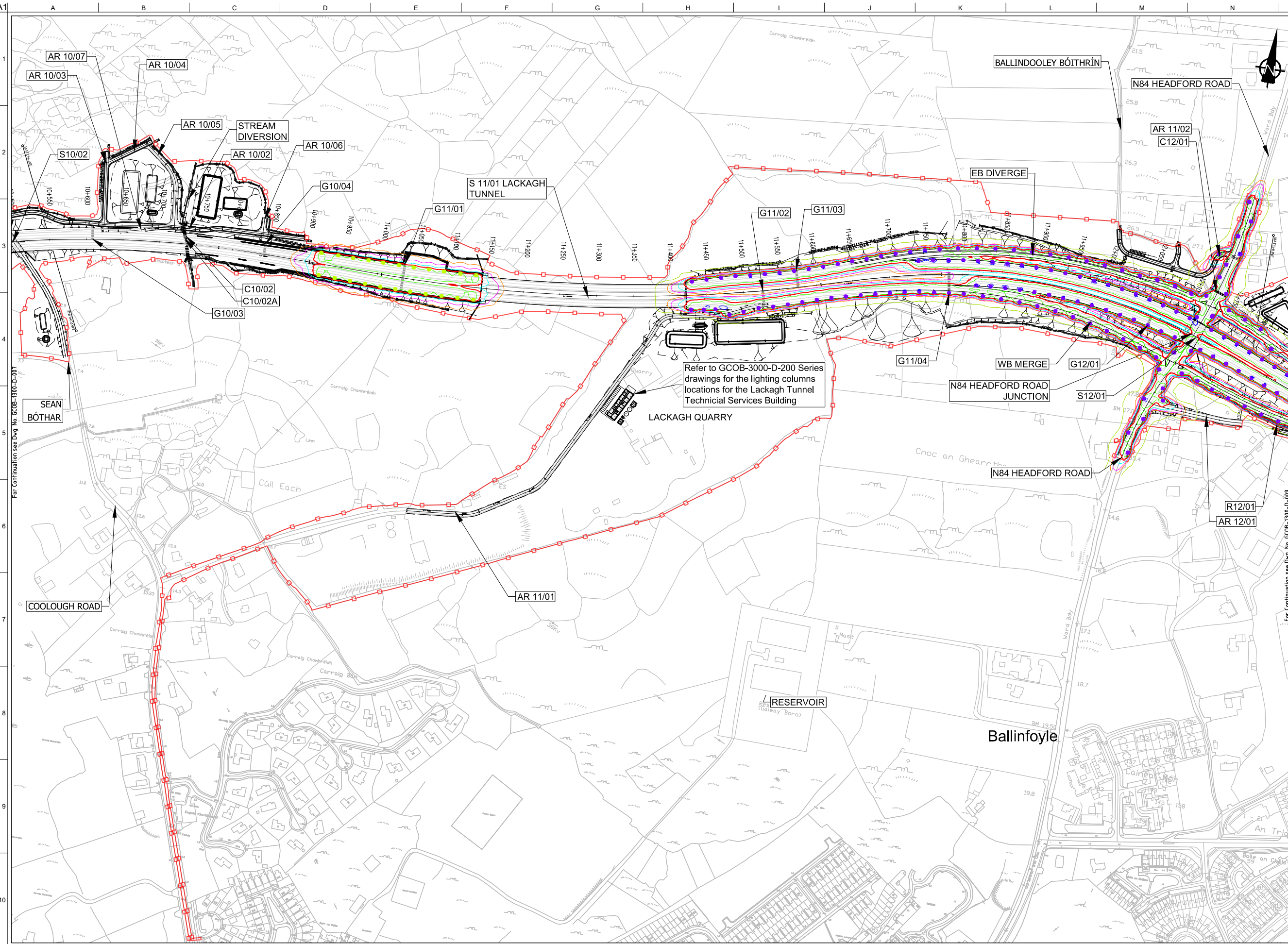




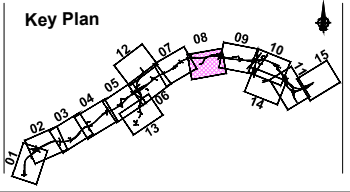


**DESIGN REPORT**

- Legend:**
- City Boundary
  - Proposed Development Boundary
  - Proposed Road Development
  - Structure (S)
  - Proposed Culvert
  - Proposed Attenuation Pond / Infiltration Basin
  - Proposed Stream Diversion
- Proposed Road Lighting Lanterns**
- Road Lighting Lantern Type A  
9430 lm LED mounted on 10m high columns
  - Road Lighting Lantern Type B  
5410 lm LED mounted on 10m high columns
  - Road Lighting Lantern Type C  
5410 lm LED mounted on 10m high columns
  - Road Lighting Lantern Type D  
8500 lm LED with backlight cowl mounted on 10m high columns
  - Road Lighting Floodlight Type E  
9380 lm LED mounted at 6m
  - Road Lighting Floodlight Type F  
8070 lm LED with front and backlight cowl mounted at 10m
- Proposed Road Lighting Isolines**
- Isoline 0.1 lux
  - Isoline 1.0 lux
  - Isoline 2.0 lux
  - Isoline 5.0 lux
  - Isoline 10 lux
  - Isoline 15 lux
  - Isoline 25 lux
- AR** AR - Access Road
- WC** WC - Watercourse
- C** C - Culvert
- R** R - Retaining Wall
- S** S - Structure
- G** G - Gantry



Refer to GCOB-3000-D-200 Series drawings for the lighting columns locations for the Lackagh Tunnel Technical Services Building



Son áiríonn sé na sonraíochtaí Shuirbhíreachtú Orlandais Éireann arna aistriúchán fíor Chéadúna OSI Umh. 2010/18CCMA/Comhairle Contae na Gaillimhe. Sárú na sonraíochtaí neamhdáraithe cóipeacht Shuirbhíreachtú Orlandais Éireann agus Rialtas na hÉireann. © Suirbhíreachtú Orlandais Éireann, 2010.

© Suirbhíreachtú Orlandais Éireann. Gach ceart ar chosaint. Umhír chéadúna 2010/18CCMA/Comhairle Contae na Gaillimhe.

Includes Ordnance Survey Ireland data reproduced under OSI Licence number 2010/18CCMA/Galway County Council. Unauthorised reproduction infringes Ordnance Survey Ireland and Government of Ireland copyright. © Ordnance Survey Ireland, 2010.

© Ordnance Survey Ireland. All rights reserved. Licence number 2010/18CCMA/Galway County Council.

Clients

**Comhairle Chontae na Gaillimhe**  
Galway County Council

**N6 Galway City Transport Project**

**An Roinn Iompair**  
Turasóireachta agus Spóirt

**TIIP**  
Borradh Iompair Éireann

Consultant

**ARUP**

Corporate House  
City East Business Park  
Ballybrit, Galway, Ireland.

Tel +353 (0)91 460675  
www.N6GalwayCity.ie  
www.arup.ie

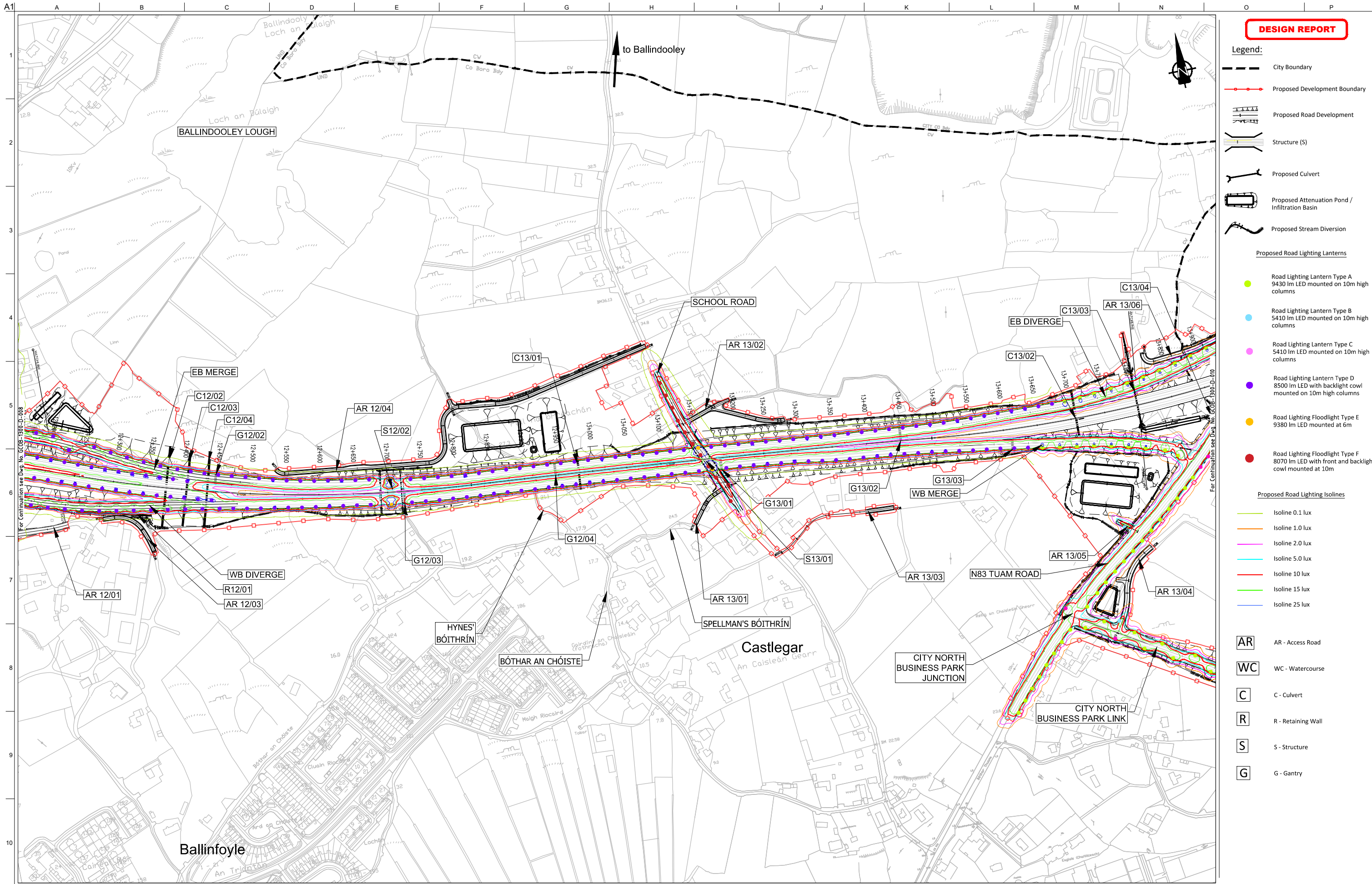
Job Title  
**N6 Galway City Ring Road**

Scale  
1:5000 @ A3

Date:  
February 2018

Drawing Title				
Road Lighting Columns and Brackets Location CH.10+550 to CH.12+200 Sheet 8 of 15				
Drawing Status				
For Information				
Job No	Drawing No	Issue		
233985	GCOB-1300-D-008	11		





**DESIGN REPORT**

- Legend:**
- City Boundary
  - Proposed Development Boundary
  - Proposed Road Development
  - Structure (S)
  - Proposed Culvert
  - Proposed Attenuation Pond / Infiltration Basin
  - Proposed Stream Diversion
- Proposed Road Lighting Lanterns**
- Road Lighting Lantern Type A  
9430 lm LED mounted on 10m high columns
  - Road Lighting Lantern Type B  
5410 lm LED mounted on 10m high columns
  - Road Lighting Lantern Type C  
5410 lm LED mounted on 10m high columns
  - Road Lighting Lantern Type D  
8500 lm LED with backlight cowl mounted on 10m high columns
  - Road Lighting Floodlight Type E  
9380 lm LED mounted at 6m
  - Road Lighting Floodlight Type F  
8070 lm LED with front and backlight cowl mounted at 10m
- Proposed Road Lighting Isolines**
- Isoline 0.1 lux
  - Isoline 1.0 lux
  - Isoline 2.0 lux
  - Isoline 5.0 lux
  - Isoline 10 lux
  - Isoline 15 lux
  - Isoline 25 lux
- AR** AR - Access Road  
**WC** WC - Watercourse  
**C** C - Culvert  
**R** R - Retaining Wall  
**S** S - Structure  
**G** G - Gantry

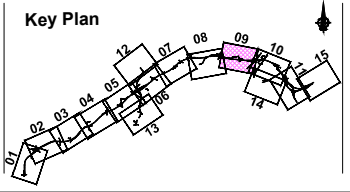
Sun áiríonn tá sonraíocht Shairbhéireacht Orlándaí Éireann arna aistriú go dtí físeán OSI Uimh. 2010/18CCMA/Comhairle Contae na Gaillimhe. Sáráilonn aistriú go dtí na h-áiríochtaí cíoscheart Shairbhéireacht Orlándaí Éireann agus Rialtas na hÉireann. © Sairbhéireacht Orlándaí Éireann, 2010.

© Sairbhéireacht Orlándaí Éireann. Gach ceart ar chosaint.  
 Uimhir cheadainis 2010/18CCMA/Comhairle Contae na Gaillimhe.

Includes Ordnance Survey Ireland data reproduced under OSI Licence number 2010/18CCMA/Galway County Council.  
 Unauthorised reproduction infringes Ordnance Survey Ireland and Government of Ireland copyright. © Ordnance Survey Ireland, 2010.

© Ordnance Survey Ireland. All rights reserved. Licence number 2010/18CCMA/Galway County Council.

Clients



Consultant

Corporate House  
 City East Business Park  
 Ballybrit, Galway, Ireland.

Tel +353 (0)91 460675  
 www.NGalwayCity.ie  
 www.arup.ie

Job Title  
**N6 Galway City Ring Road**

Scale  
 1:5000 @ A3

Date:  
 February 2018

Issue	Date	By	Chkd	Appd
11	22/02/2018	AG	JD	EMC

Drawing Title  
**Road Lighting Columns and Brackets Location  
 CH.12+200 to CH.13+800  
 Sheet 9 of 15**

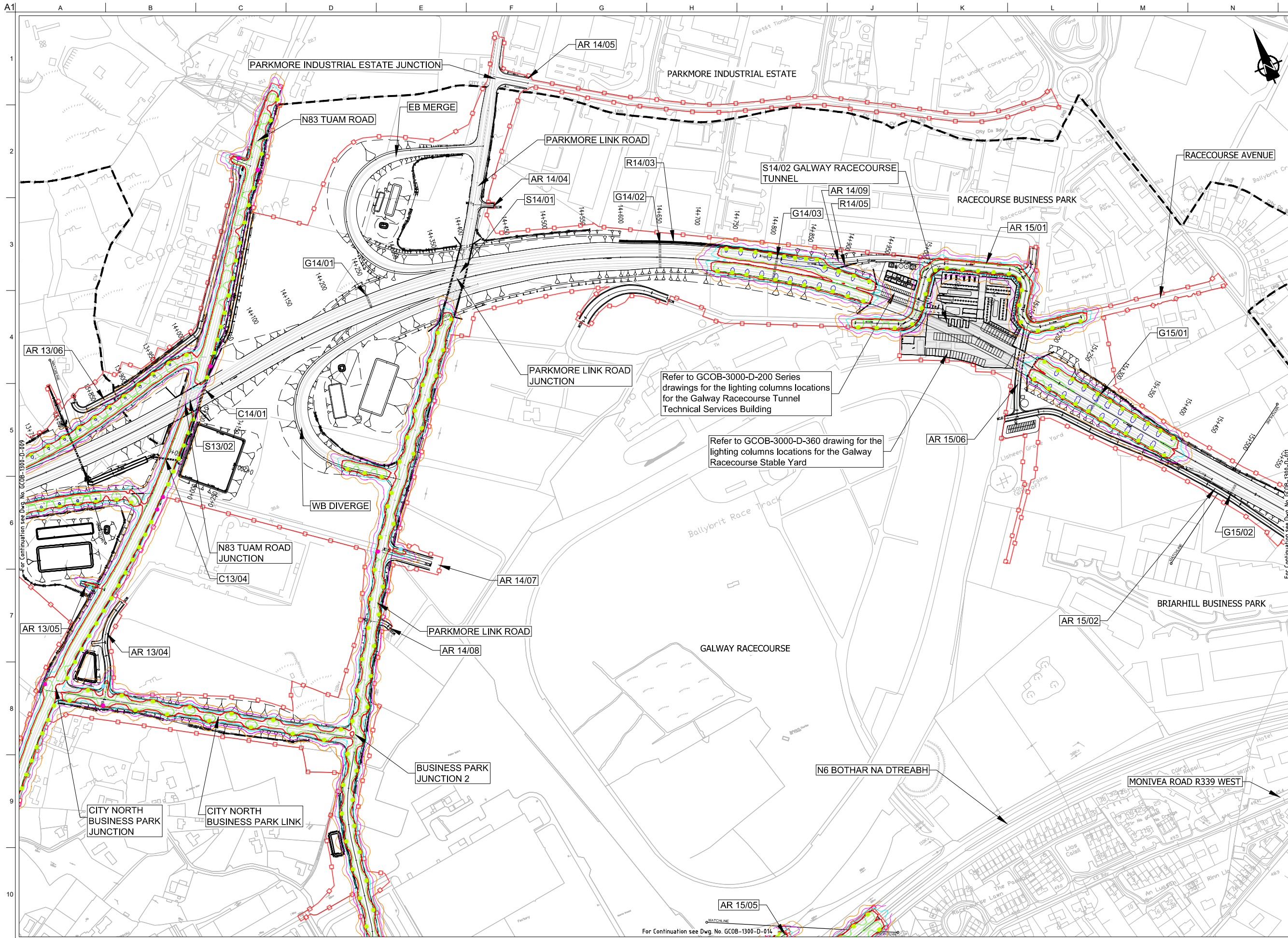
Drawing Status  
**For Information**

Job No	Drawing No	Issue
233985	GCOB-1300-D-009	11



**DESIGN REPORT**

- Legend:**
- City Boundary
  - Proposed Development Boundary
  - Proposed Road Development
  - Structure (S)
  - Proposed Culvert
  - Proposed Attenuation Pond / Infiltration Basin
  - Proposed Stream Diversion
- Proposed Road Lighting Lanterns**
- Road Lighting Lantern Type A  
9430 lm LED mounted on 10m high columns
  - Road Lighting Lantern Type B  
5410 lm LED mounted on 10m high columns
  - Road Lighting Lantern Type C  
5410 lm LED mounted on 10m high columns
  - Road Lighting Lantern Type D  
8500 lm LED with backlight cowl mounted on 10m high columns
  - Road Lighting Floodlight Type E  
9380 lm LED mounted at 6m
  - Road Lighting Floodlight Type F  
8070 lm LED with front and backlight cowl mounted at 10m
- Proposed Road Lighting Isolines**
- Isoline 0.1 lux
  - Isoline 1.0 lux
  - Isoline 2.0 lux
  - Isoline 5.0 lux
  - Isoline 10 lux
  - Isoline 15 lux
  - Isoline 25 lux
- AR** AR - Access Road  
**WC** WC - Watercourse  
**C** C - Culvert  
**R** R - Retaining Wall  
**S** S - Structure  
**G** G - Gantry



Refer to GCOB-3000-D-200 Series drawings for the lighting columns locations for the Galway Racecourse Tunnel Technical Services Building

Refer to GCOB-3000-D-360 drawing for the lighting columns locations for the Galway Racecourse Stable Yard

For Continuation see Dwg. No. GCOB-1300-D-014

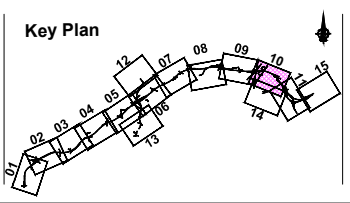
Son áiríamh tá sonraíocht Shairbhíreacht Ordnáis Éireann arna aistriú go dtailíocht físe Chéadúna OSI Uimh. 2010/18CCMA/Comhairle Contae na Gaillimhe. Sárúilíon aistriú go dtailíocht na bhfeidhmíocht císcheacht Shairbhíreacht Ordnáis Éireann agus Rialtas na hÉireann. © Sairbhíreacht Ordnáis Éireann, 2010.

© Sairbhíreacht Ordnáis Éireann. Gach ceart ar chosaint. Uimhir cheadúnaís 2010/18CCMA/Comhairle Contae na Gaillimhe.

Includes Ordnance Survey Ireland data reproduced under OSI Licence number 2010/18CCMA/Galway County Council. Unauthorised reproduction infringes Ordnance Survey Ireland and Government of Ireland copyright. © Ordnance Survey Ireland, 2010.

© Ordnance Survey Ireland. All rights reserved. Licence number 2010/18CCMA/Galway County Council.

Clients



Consultant

Corporate House  
City East Business Park  
Ballybrit, Galway, Ireland.

Tel +353 (0)91 460675  
www.NGalwayCity.ie  
www.arup.ie

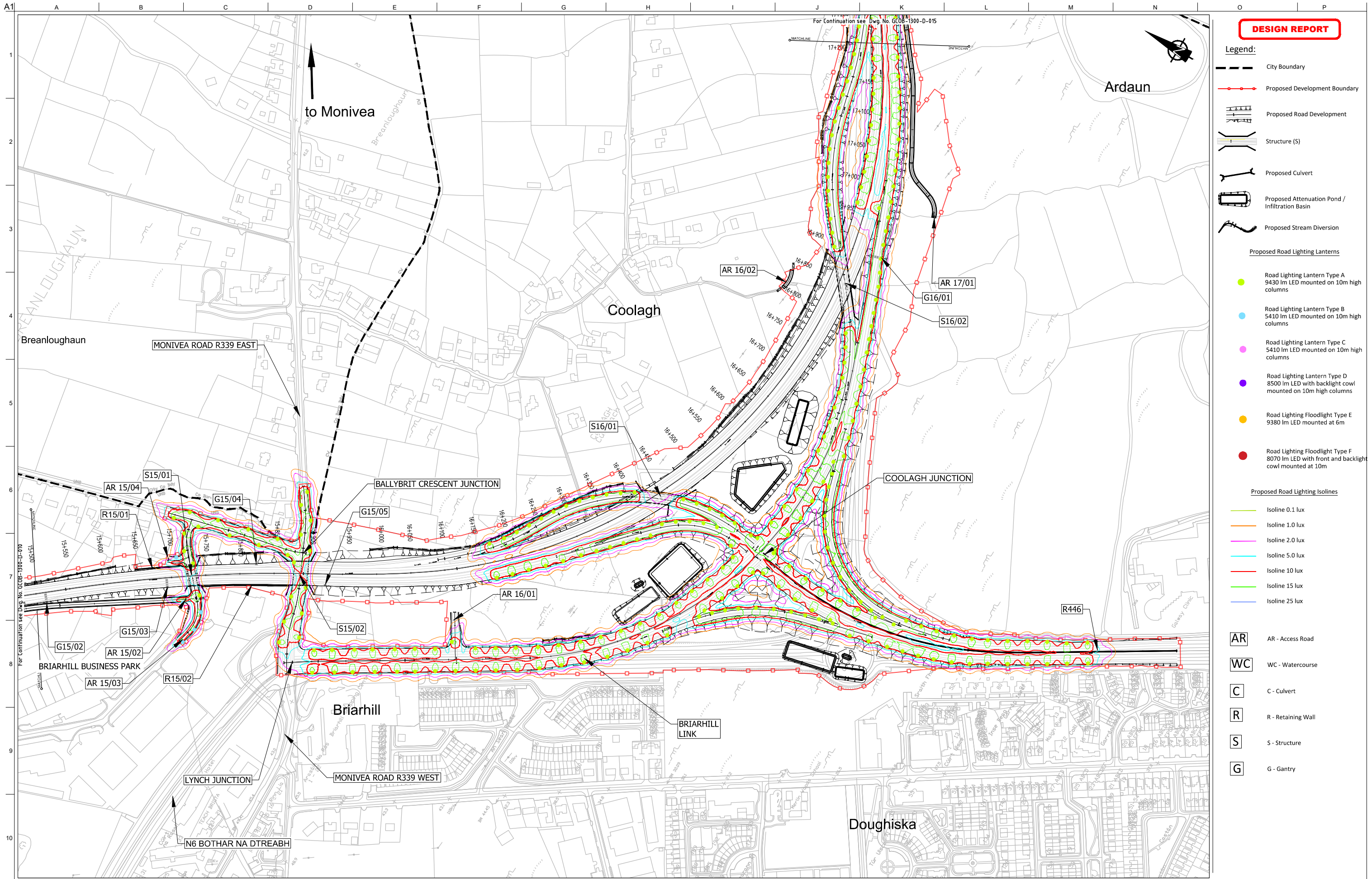
Job Title  
**N6 Galway City Ring Road**

Scale  
1:5000 @ A3

Date:  
February 2018

Drawing Title			
Road Lighting Columns and Brackets Location CH.13+800 to CH.15+500 Sheet 10 of 15			
Drawing Status			
For Information			
Job No	Drawing No	Issue	
233985	GCOB-1300-D-010	11	





**DESIGN REPORT**

- Legend:**
- City Boundary
  - Proposed Development Boundary
  - Proposed Road Development
  - Structure (S)
  - Proposed Culvert
  - Proposed Attenuation Pond / Infiltration Basin
  - Proposed Stream Diversion
- Proposed Road Lighting Lanterns**
- Road Lighting Lantern Type A 9430 lm LED mounted on 10m high columns
  - Road Lighting Lantern Type B 5410 lm LED mounted on 10m high columns
  - Road Lighting Lantern Type C 5410 lm LED mounted on 10m high columns
  - Road Lighting Lantern Type D 8500 lm LED with backlight cowl mounted on 10m high columns
  - Road Lighting Floodlight Type E 9380 lm LED mounted at 6m
  - Road Lighting Floodlight Type F 8070 lm LED with front and backlight cowl mounted at 10m
- Proposed Road Lighting Isolines**
- Isoline 0.1 lux
  - Isoline 1.0 lux
  - Isoline 2.0 lux
  - Isoline 5.0 lux
  - Isoline 10 lux
  - Isoline 15 lux
  - Isoline 25 lux
- AR** AR - Access Road  
**WC** WC - Watercourse  
**C** C - Culvert  
**R** R - Retaining Wall  
**S** S - Structure  
**G** G - Gantry

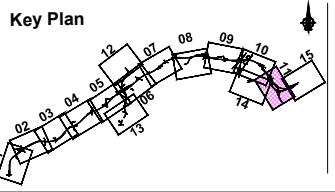
San áirneamh tá sonraíocht Shuirbhíreacht Orlándaís Éireann arna aistriú go dtailíocht físe Chaidéinis OSI Uimh. 2010/18CCMA/Comhairle Contae na Gaillimhe. Sáráilomn aistriú go dtailíocht físe cíoscheart Shuirbhíreacht Orlándaís Éireann agus Rialtas na hÉireann. © Suirbhíreacht Orlándaís Éireann, 2010.

© Suirbhíreacht Orlándaís Éireann. Gach ceart ar chosaint. Uimhir cheadainis 2010/18CCMA/Comhairle Contae na Gaillimhe.

Includes Ordnance Survey Ireland data reproduced under OSI Licence number 2010/18CCMA/Galway County Council. Unauthorised reproduction infringes Ordnance Survey Ireland and Government of Ireland copyright. © Ordnance Survey Ireland, 2010.

© Ordnance Survey Ireland. All rights reserved. Licence number 2010/18CCMA/Galway County Council.

**Clients**



**Consultant**

Corporate House  
City East Business Park  
Ballybrit, Galway, Ireland.

Tel +353 (0)91 460675  
www.N6GalwayCity.ie  
www.arup.ie

**Job Title**  
N6 Galway City Ring Road

**Scale**  
1:5000 @ A3

**Date:**  
February 2018

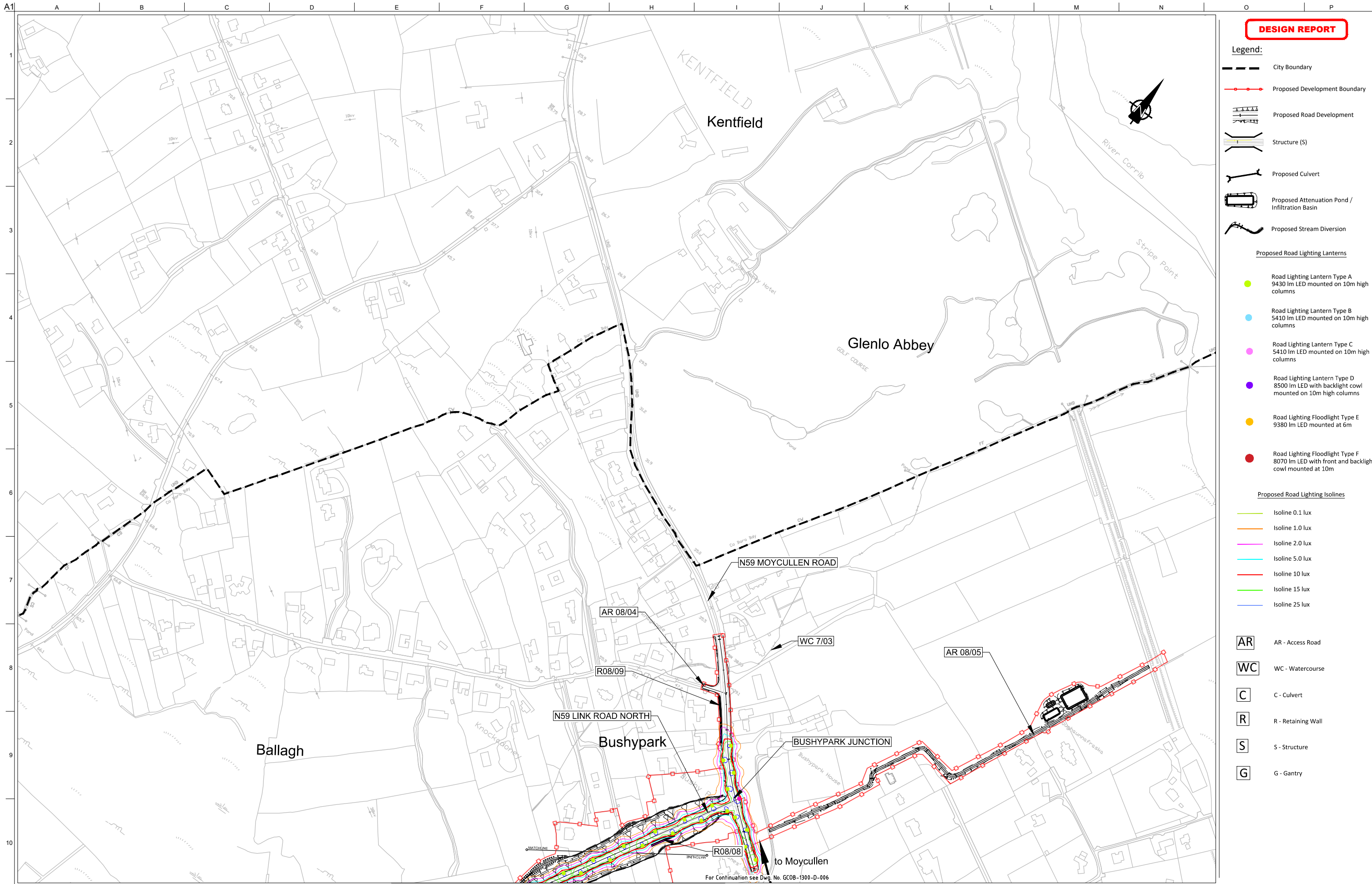
Issue	Date	By	Chkd	Appd
11	22/02/2018	AG	JD	EMC

**Drawing Title**  
Road Lighting Columns and Brackets Location  
CH.15+500 to CH.17+200  
Sheet 11 of 15

**Drawing Status**  
For Information

Job No	Drawing No	Issue
233985	GCOB-1300-D-011	11





**DESIGN REPORT**

- Legend:**
- City Boundary
  - Proposed Development Boundary
  - Proposed Road Development
  - Structure (S)
  - Proposed Culvert
  - Proposed Retaining Wall
  - Proposed Attenuation Pond / Infiltration Basin
  - Proposed Stream Diversion
- Proposed Road Lighting Lanterns**
- Road Lighting Lantern Type A  
9430 lm LED mounted on 10m high columns
  - Road Lighting Lantern Type B  
5410 lm LED mounted on 10m high columns
  - Road Lighting Lantern Type C  
5410 lm LED mounted on 10m high columns
  - Road Lighting Lantern Type D  
8500 lm LED with backlight cowl mounted on 10m high columns
  - Road Lighting Floodlight Type E  
9380 lm LED mounted at 6m
  - Road Lighting Floodlight Type F  
8070 lm LED with front and backlight cowl mounted at 10m
- Proposed Road Lighting Isolines**
- Isoline 0.1 lux
  - Isoline 1.0 lux
  - Isoline 2.0 lux
  - Isoline 5.0 lux
  - Isoline 10 lux
  - Isoline 15 lux
  - Isoline 25 lux
- AR** AR - Access Road  
**WC** WC - Watercourse  
**C** C - Culvert  
**R** R - Retaining Wall  
**S** S - Structure  
**G** G - Gantry

San áiríúmh tá sonraíocht Shuirbhíreachtú Orlandáis Éireann arna aistriúgeadh fíor Cheadúnas OSI Uimh. 2010/18CCMA/Comhairle Contae na Gaillimhe. Sáráilom aistriúgeadh neamhdáraithe cóipeacht Shuirbhíreachtú Orlandáis Éireann agus Rialtas na hÉireann. © Suirbhíreachtú Orlandáis Éireann, 2010.

© Suirbhíreachtú Orlandáis Éireann. Gach ceart ar chosaint.  
 Uimhir cheadúnais 2010/18CCMA/Comhairle Contae na Gaillimhe.

Includes Ordnance Survey Ireland data reproduced under OSI Licence number 2010/18CCMA/Galway County Council.  
 Unauthorised reproduction infringes Ordnance Survey Ireland and Government of Ireland copyright. © Ordnance Survey Ireland, 2010.

© Ordnance Survey Ireland. All rights reserved. Licence number 2010/18CCMA/Galway County Council.

**Clients**

**Key Plan**

**Consultant**

Corporate House  
 City East Business Park  
 Ballybrit, Galway, Ireland.

Tel +353 (0)91 460675  
 www.N6GalwayCity.ie  
 www.arup.ie

**Job Title**  
 N6 Galway City Ring Road

**Scale**  
 1:5000 @ A3

**Date:**  
 February 2018

**Drawing Title**  
 Road Lighting Columns and Brackets Location  
 N59 Link Road North  
 Sheet 12 of 15

**Drawing Status**

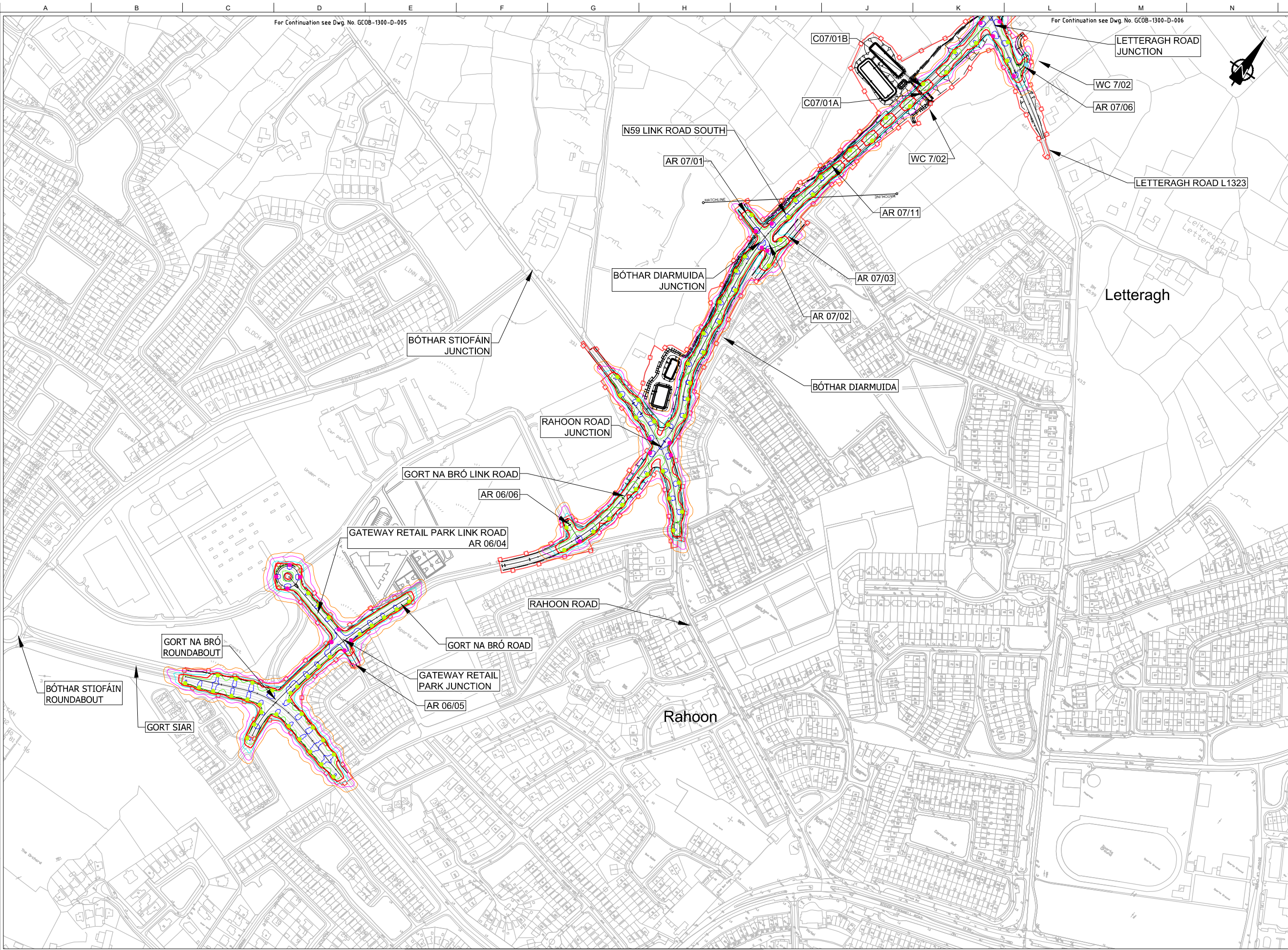
Issue	Date	By	Chkd	Appd
11	22/02/2018	AG	JD	EMC

**For Information**

Job No	Drawing No	Issue
233985	GC0B-1300-D-012	11



A1  
1  
2  
3  
4  
5  
6  
7  
8  
9  
10



**DESIGN REPORT**

- Legend:**
- City Boundary
  - Proposed Development Boundary
  - Proposed Road Development
  - Structure (S)
  - Proposed Culvert
  - Proposed Attenuation Pond / Infiltration Basin
  - Proposed Stream Diversion
- Proposed Road Lighting Lanterns**
- Road Lighting Lantern Type A  
9430 lm LED mounted on 10m high columns
  - Road Lighting Lantern Type B  
5410 lm LED mounted on 10m high columns
  - Road Lighting Lantern Type C  
5410 lm LED mounted on 10m high columns
  - Road Lighting Lantern Type D  
8500 lm LED with backlight cowl mounted on 10m high columns
  - Road Lighting Floodlight Type E  
9380 lm LED mounted at 6m
  - Road Lighting Floodlight Type F  
8070 lm LED with front and backlight cowl mounted at 10m
- Proposed Road Lighting Isolines**
- Isoline 0.1 lux
  - Isoline 1.0 lux
  - Isoline 2.0 lux
  - Isoline 5.0 lux
  - Isoline 10 lux
  - Isoline 15 lux
  - Isoline 25 lux
- AR** AR - Access Road  
**WC** WC - Watercourse  
**C** C - Culvert  
**R** R - Retaining Wall  
**S** S - Structure  
**G** G - Gantry

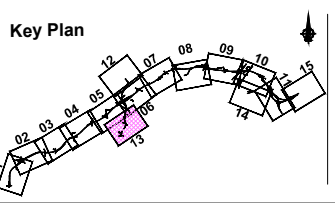
San áiríamh tá sonraíocht Shairbhéireachta Orlánáis Éireann arna aistriú go dtailíú físe Chaidéinas OSI Uimh. 2010/18CCMA/Comhairle Contae na Gaillimhe. Sáráilom aistriú go dtailíú neamhdáraithe cóipeacht Shairbhéireachta Orlánáis Éireann agus Rialtas na hÉireann. © Sairbhéireachta Orlánáis Éireann, 2010.

© Sairbhéireachta Orlánáis Éireann. Gach ceart ar chosaint.  
 Uimhir cheadnáis 2010/18CCMA/Comhairle Contae na Gaillimhe.

Includes Ordnance Survey Ireland data reproduced under OSI Licence number 2010/18CCMA/Galway County Council.  
 Unauthorised reproduction infringes Ordnance Survey Ireland and Government of Ireland copyright. © Ordnance Survey Ireland, 2010.

© Ordnance Survey Ireland. All rights reserved. Licence number 2010/18CCMA/Galway County Council.

Clients



Consultant

Corporate House  
 City East Business Park  
 Ballybrit, Galway, Ireland.

Tel +353 (0)91 460675  
 www.N6GalwayCity.ie  
 www.arup.ie

Job Title  
**N6 Galway City Ring Road**

Scale  
 1:5000 @ A3

Date:  
 February 2018

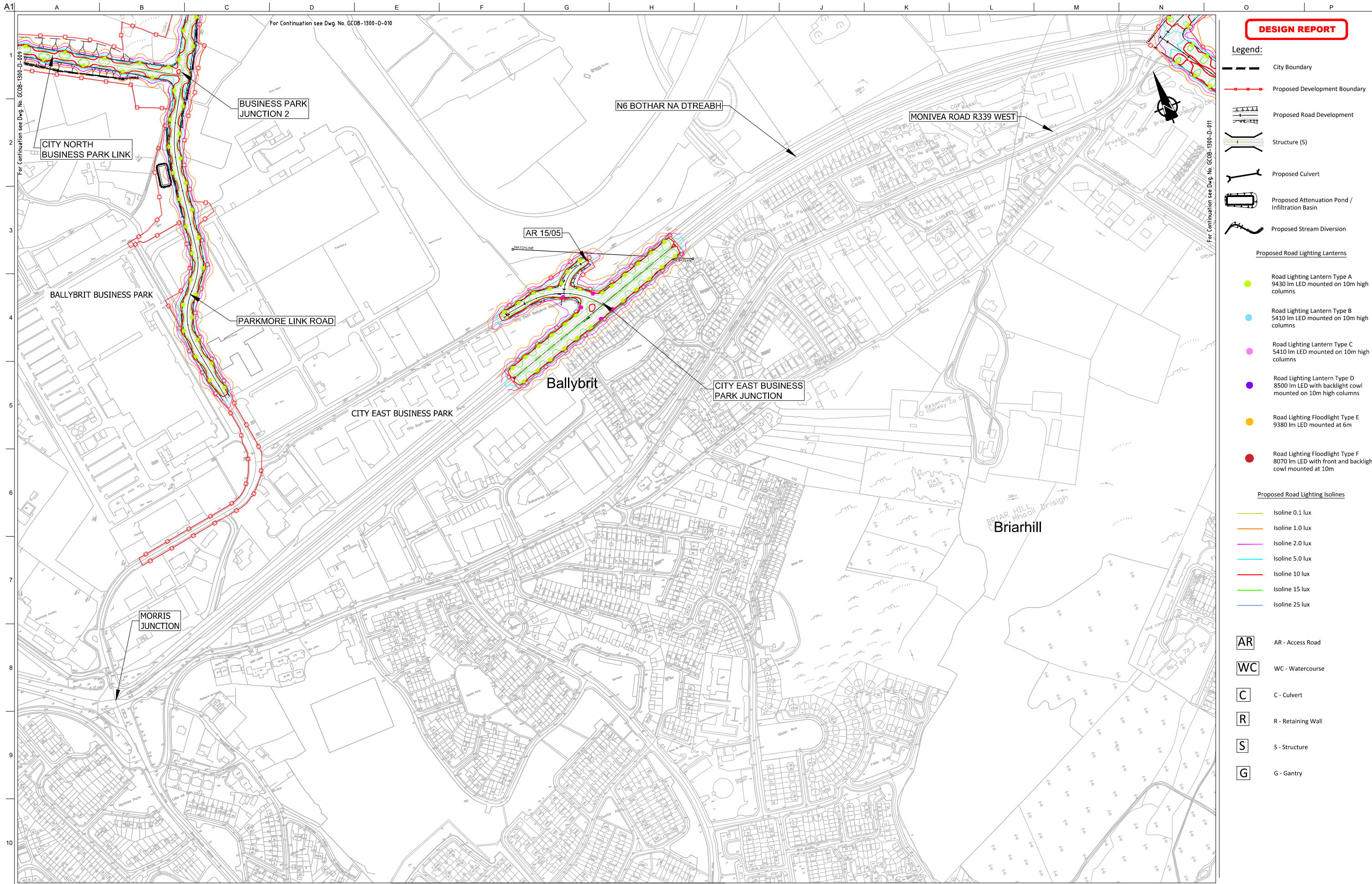
Issue	Date	By	Chkd	Appd
11	22/02/2018	AG	JD	EMC

Drawing Title  
**Road Lighting Columns and Brackets Location  
 N59 Link Road South  
 Sheet 13 of 15**

Drawing Status  
**For Information**

Job No <b>233985</b>	Drawing No <b>GC0B-1300-D-013</b>	Issue <b>11</b>
-------------------------	--------------------------------------	--------------------





**DESIGN REPORT**

- Legend:**
- City Boundary
  - Proposed Development Boundary
  - Proposed Road Development
  - Structure (S)
  - Proposed Culvert
  - Proposed Attenuation Pond / Infiltration Basin
  - Proposed Stream Diversion
- Proposed Road Lighting Lanterns**
- Road Lighting Lantern Type A  
9430 lm LED mounted on 10m high columns
  - Road Lighting Lantern Type B  
5410 lm LED mounted on 10m high columns
  - Road Lighting Lantern Type C  
5410 lm LED mounted on 10m high columns
  - Road Lighting Lantern Type D  
8500 lm LED with backlight cowl mounted on 10m high columns
  - Road Lighting Floodlight Type E  
9380 lm LED mounted at 6m
  - Road Lighting Floodlight Type F  
8070 lm LED with front and backlight cowl mounted at 10m
- Proposed Road Lighting Isolines**
- Isoline 0.1 lux
  - Isoline 1.0 lux
  - Isoline 2.0 lux
  - Isoline 5.0 lux
  - Isoline 10 lux
  - Isoline 15 lux
  - Isoline 25 lux
- AR** AR - Access Road
- WC** WC - Watercourse
- C** C - Culvert
- R** R - Retaining Wall
- S** S - Structure
- G** G - Gantry

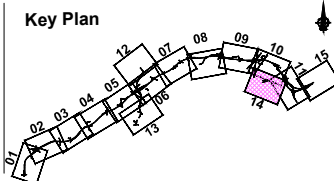
Son áiríamh tá sonraíocht Shairbhéiríochtaí Orlándaís Éireann arna aistriú go dtí físeán Chaidéas OSÍ Uimh. 2010/18CCMA/Comhairle Contae na Gaillimhe. Sáráilom aistriú go dtí neamháráilíocht cóipeacht Shairbhéiríochtaí Orlándaís Éireann agus Rialtas na hÉireann. © Sairbhéiríochtaí Orlándaís Éireann, 2010.

© Sairbhéiríochtaí Orlándaís Éireann. Gach ceart ar chosaint.  
Uimhir cheadúnais 2010/18CCMA/Comhairle Contae na Gaillimhe.

Includes Ordnance Survey Ireland data reproduced under OSI Licence number 2010/18CCMA/Galway County Council.  
Unauthorised reproduction infringes Ordnance Survey Ireland and Government of Ireland copyright. © Ordnance Survey Ireland, 2010.

© Ordnance Survey Ireland. All rights reserved. Licence number 2010/18CCMA/Galway County Council.

**Clients**



**Consultant**

Corporate House  
City East Business Park  
Ballybrit, Galway, Ireland.

Tel +353 (0)91 460675  
www.N6GalwayCity.ie  
www.arup.ie

**Job Title**  
N6 Galway City Ring Road

**Scale**  
1:5000 @ A3

**Date:**  
February 2018

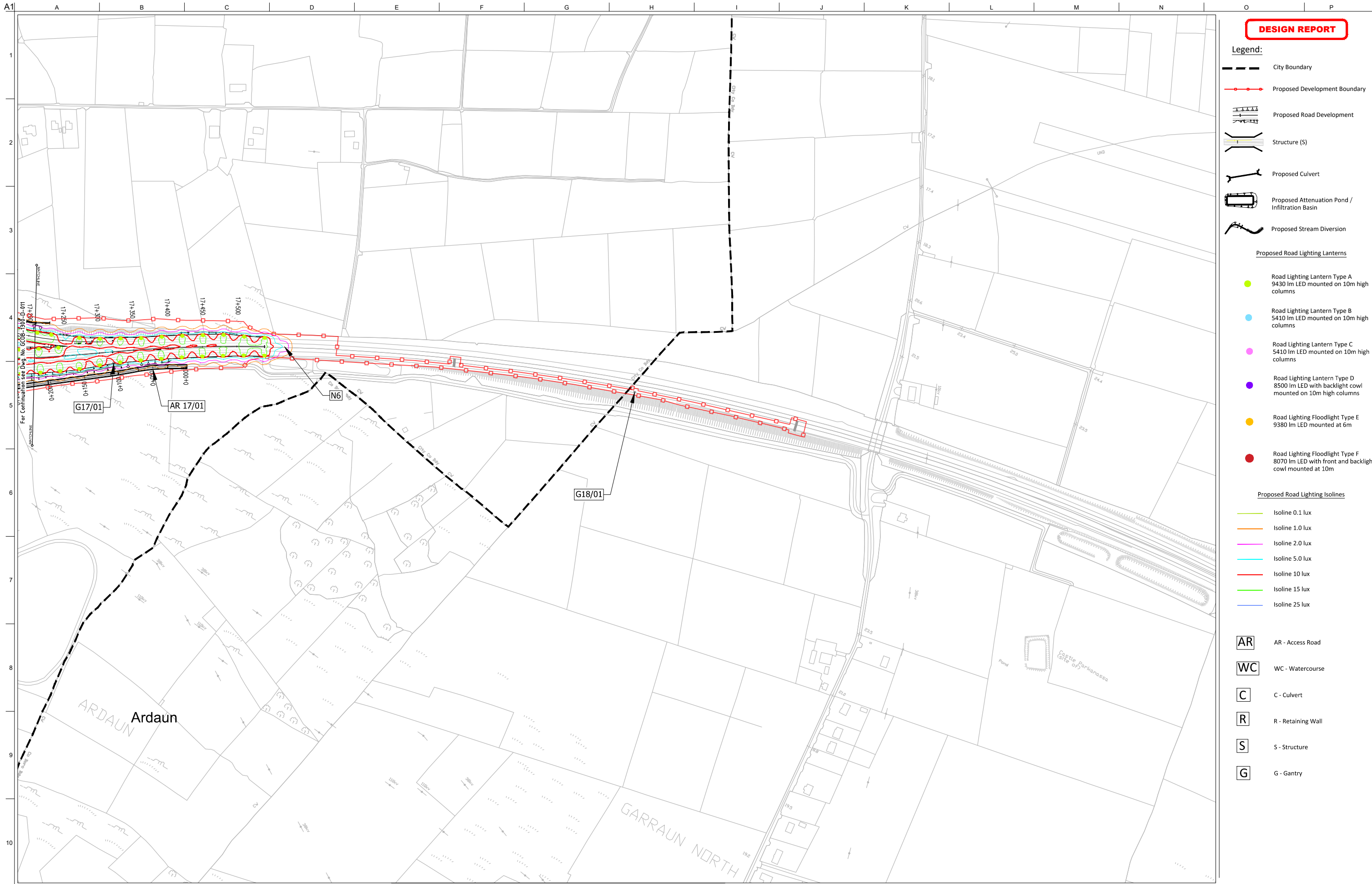
Issue	Date	By	Chkd	Appd
11	22/02/2018	AG	JD	EMC

**Drawing Title**  
Road Lighting Columns and Brackets Location  
City East Junction  
Sheet 14 of 15

**Drawing Status**  
For Information

<b>Job No</b> 233985	<b>Drawing No</b> GC08-1300-D-014	<b>Issue</b> 11
-------------------------	--------------------------------------	--------------------





**DESIGN REPORT**

- Legend:**
- City Boundary
  - Proposed Development Boundary
  - Proposed Road Development
  - Structure (S)
  - Proposed Culvert
  - Proposed Attenuation Pond / Infiltration Basin
  - Proposed Stream Diversion

**Proposed Road Lighting Lanterns**

- Road Lighting Lantern Type A  
9430 lm LED mounted on 10m high columns
- Road Lighting Lantern Type B  
5410 lm LED mounted on 10m high columns
- Road Lighting Lantern Type C  
5410 lm LED mounted on 10m high columns
- Road Lighting Lantern Type D  
8500 lm LED with backlight cowl mounted on 10m high columns
- Road Lighting Floodlight Type E  
9380 lm LED mounted at 6m
- Road Lighting Floodlight Type F  
8070 lm LED with front and backlight cowl mounted at 10m

**Proposed Road Lighting Isolines**

- Isoline 0.1 lux
- Isoline 1.0 lux
- Isoline 2.0 lux
- Isoline 5.0 lux
- Isoline 10 lux
- Isoline 15 lux
- Isoline 25 lux

- AR - Access Road
- WC - Watercourse
- C - Culvert
- R - Retaining Wall
- S - Structure
- G - Gantry

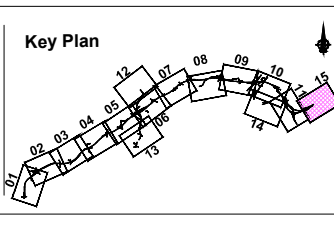
Sun áiríamh tá sonraíocht Shairbhíreachtú Orlandáis Éireann arna aistriú go dtí físeán Ceardúnas OSI Uimh. 2010/18CCMA/Comhairle Contae na Gaillimhe. Sáráilonn aistriú go dtí neamhdáiríocht cíoscheart Shairbhíreachtú Orlandáis Éireann agus Rialtas na hÉireann. © Sairbhíreachtú Orlandáis Éireann, 2010.

© Sairbhíreachtú Orlandáis Éireann. Gach ceart ar chosaint. Uimhir cheadúnais 2010/18CCMA/Comhairle Contae na Gaillimhe.

Includes Ordnance Survey Ireland data reproduced under OSI Licence number 2010/18CCMA/Galway County Council. Unauthorised reproduction infringes Ordnance Survey Ireland and Government of Ireland copyright. © Ordnance Survey Ireland, 2010.

© Ordnance Survey Ireland. All rights reserved. Licence number 2010/18CCMA/Galway County Council.

Clients



Consultant

Corporate House  
City East Business Park  
Ballybrit, Galway, Ireland.

Tel +353 (0)91 460675  
www.N6GalwayCity.ie  
www.arup.ie

Job Title  
**N6 Galway City Ring Road**

Scale  
1:5000 @ A3

Date:  
February 2018

Issue	Date	By	Chkd	Appd
11	22/02/2018	AG	JD	EMC

Drawing Title  
**Road Lighting Columns and Brackets Location**  
CH.17+540 (End of Scheme) to E:isting N6 (CH.18+550)

Sheet 15 of 15

Drawing Status  
**For Information**

Job No <b>233985</b>	Drawing No <b>GCOB-1300-D-015</b>	Issue <b>11</b>
-------------------------	--------------------------------------	--------------------